

# The Waran Report

## A Newsletter from the NAEAC Chair

### A Note from Nat

Kia ora koutou

As we come towards the middle of 2023, NAEAC has been busy with Code reviews, visits with AECs, and working on initiatives to encourage advances in the 3Rs within New Zealand in the RTT space. At our last meeting, NAEAC were very pleased to receive a presentation from the 2022 recipient of the Aotearoa New Zealand John Schofield Three Rs Award, Dr Neil Ward of Massey University on an interesting initiative for facilitating animal tissue sharing using a website. This was followed by a stimulating discussion on potential future applications, and how the initiative could be used to aid the application of the 3Rs in RTT nationally.



Over the past months NAEAC subcommittees have been progressing a number of workstreams, including focusing on the use of animals in teaching, NAEAC publications, the 4th R – Respect, and looking into how Mātauranga Māori can be incorporated across the NAEAC portfolio of work. In this space, we are working with MPI colleagues to plan for a 2023 joint meeting with NAWAC to continue our korero

in relation to our commitment to embed Mātauranga Māori into our work.

Looking forward we still have a number of activities planned for the second half of the year, including Code reviews, the publication of the 2022 Annual Report, and continuing to interact with AEC Chairs and members through the course of the year.

Ngā mihi nui  
Nat

### Team Spotlight

*We are very pleased to welcome Jessica Walker and Joanne Holter to the committee!*

#### *Jessica Walker*

Jessica is currently the National Science Manager for SPCA New Zealand and over the past 15 years she has worked in both academic and industry animal welfare management roles. She is particularly interested in Shelter Medicine Research and improving animal welfare in the shelter environment but has always held an interest more generally in the use of animals in research, testing and teaching. Jessica is a current member of AEC committees.



Jessica obtained her PhD from the University of Queensland, Australia where she explored whether animals have an emotional experience akin to human grief. Prior to this she completed her MSc in Animal Behaviour and Welfare at the University of Edinburgh, Scotland. She was among the first cohort of under-graduates from the Bachelor of Applied Animal Technology at Unitec and holds a graduate teaching qualification in higher education. Jessica's home life is shared with her husband and two boys (aged 7 & 5), as well as two black labs and 3 Burmese cats.

#### *Joanne Holter*

Jo's passion for production animal health started whilst growing up on a dairy farm in Nelson. Since graduating with a Bachelor of Veterinary Science with Distinction from Massey University in 2001, she has worked as a livestock veterinarian both in New Zealand and in the UK and has owned and operated a 400-cow dairy farming enterprise.



Jo joined the animal health industry 13 years ago and is currently MSD Animal Health New Zealand's Livestock Veterinary Technical & Aftersales lead in which she is responsible for the veterinary, technology training and service desk teams that support the biopharma and technology business for MSD Animal Health, delivering world-class customer service to farmers and veterinarians.

Jo chairs the MSD Animal Health animal ethics committee, is a representative on the Member Advisory Group of the NZVA and a member of the BVD Steering Committee. She is a firm believer in the value of science to NZ's primary production sector and thinks R&D companies serve an important role in the advancement of animal health and production.

*In addition to the new members on the committee, we also welcome Stacey Parbhu, Tamara Diesch, and Johanna Neuhauser to the NAEAC MPI Secretariat.*

#### *Stacey Parbhu*

Stacey has recently been welcomed to MPI as one of two Animal Welfare Science Team managers, taking care of the team that administers the functions of Ministerial Committees NAEAC and NAWAC, as well as administering Part 6 of the Animal Welfare Act 1999 pertaining to the use of animals in Research, Testing and Teaching.



Stacey graduated in 2013 with a BSc Physiology/Genetics at Massey University and has worked across a range of customer focussed and research animal spaces. Stacey joined Victoria University in 2017 to collate and redevelop the existing animal facilities into a new, state-

of-the-art facility which led to taking on the animal facility manager role formally in 2021. In addition to this, Stacey is finishing up a master's thesis in cell and molecular bioscience which involves creating aneuploid mouse embryos via IVF to investigate new methodologies for assisted reproductive technologies.

#### *Tamara Diesch*

Tamara has a science background, having completed a master's and PhD degree in Physiology at Massey University. She has been with the animal welfare science team for 10 years and is part of the NAWAC/NAEAC secretariat. Until now her work priorities included NAWAC support for the codes of welfare review programme, in particular the dairy code, and support for the review of NAWAC's trap testing guidelines.



#### *Johanna Neuhauser*

Johanna has completed a BAppSc majoring in Animal Management and Welfare, and an Interdisciplinary MSc in Human-Animal Interactions. Johanna started her career working with the Auckland SPCA and then moved to Unitec where she lectured in the topics of animal management and husbandry. After returning to New Zealand in November 2022, Johanna joined the MPI Animal Welfare Science team as an Animal Welfare Science Adviser and will act as the NAEAC Secretary.



We also want to acknowledge the previous NAEAC Secretary, Kitty Gash. We sincerely appreciate the hard work and effort that Kitty put into supporting NAEAC and wish her all the very best in her new role within the MPI Animal Welfare Science team.

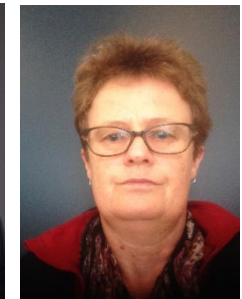
#### **Accredited Reviewers**

##### *Farewell to Alan McLeod*

We would like to commend Dr Alan McLeod for his excellent contribution as an accredited reviewer over the last ten years. Alan has officially resigned but will still collaborate with MPI from time to time as he has extensive knowledge of the research, testing and teaching space. Thank you for your service, Alan!

##### *Reappointments*

Please note that Drs Mark Vallarta and Wendy Cook have been reappointed as accredited reviewers. Accredited reviewers play a critical role in assessing code holder compliance with the Animal Welfare Act 1999 and the organisation's code of ethical conduct.



For more information regarding accredited reviewers please visit the [MPI website](#) or contact MPI ([animal.welfare@mpi.govt.nz](mailto:animal.welfare@mpi.govt.nz)).

### **Experimental Animals Entering the Food Chain – Update**

Changes have been made to legislation under the Animal Products Act 1999, specifically the Animal Products Regulations 2021, which means that experimental/trial/research (ETR) animals presented for slaughter are now handled in a different way.

Over the past few months, the MPI Animal Products Team has developed additional guidance around these requirements. You can read about it [here](#). If you have queries, please contact the MPI Animal Products Team ([animal.products@mpi.govt.nz](mailto:animal.products@mpi.govt.nz)).

### **Animal Use Statistics Collection System Update**

After a long development process, MPI launched a new system for the collection of animal use statistics in December 2022. MPI has confirmed that the system roll out has been a success and that many of the previously identified inefficiencies have been eliminated with the new process.

Thank you to all the organisations that have used the new system for the first time this year – your feedback has been very valuable and MPI will continue to refine their process.

As there was some confusion with returns this year (and previous years), please note that even if an organisation hasn't used any animals during the previous year, a nil return is still required. Also, some code holders provide animal use statistics to MPI on behalf of

parented organisations. However, this must be clarified between the two parties to ensure the timely submission of animal use statistics.

If you have any questions about animal use statistics, please contact the MPI Animal Welfare Science Team ([animal.welfare@mpi.govt.nz](mailto:animal.welfare@mpi.govt.nz)).

## **Good Practice Guide** for the use of animals in research, testing and teaching

### **NAEAC Good Practice Guide Update**

NAEAC has recently amended and is due to publish an updated Good Practice Guide (GPG) for 2023.

Please see below an overview of some of the key changes below. We strongly encourage you re-familiarise yourself with the updated content after it is published, as this is important for your ongoing work.

### Who the GPG applies to:

The GPG **applies equally** to organisations that hold a code of ethical conduct as well as every organisation that has an arrangement to use another organisation's code of ethical conduct.

### Monitoring

On an annual basis, the AEC will actively monitor at least 10% of grade A-B projects as well as all C-E projects. This includes projects undertaken at parented organisations.

### Compliance

The updated GPG includes additional information to describe types of non-compliance as well as detail regarding how to respond to non-compliances when they occur (including timeframes, management and escalation processes).

**As a reminder, please note the following (these sections have not been updated in the GPG).**

### Consensus Decision Making

NAEAC strongly recommends that decisions are made by consensus and where consensus cannot be reached an application should be rejected.

### Training of Staff

Qualifications of all key personnel (including care staff) are specified/declared in the application and that this is completed before manipulations commence. This would also include any additional training that is required.

### Subcommittees

Subcommittees may consider new applications however these must include at least two of the external statutory members.

### **Advances in 3 Rs**

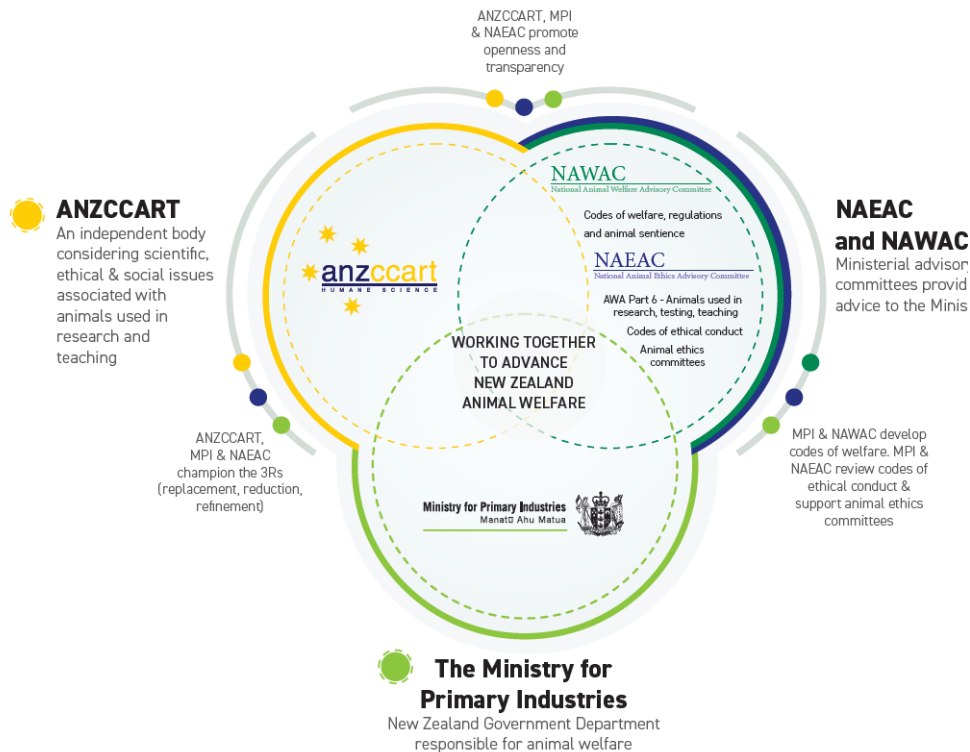
#### *£1.6M awarded to develop a Virtual Second Species*

The Virtual Second Species is NC3Rs first Mega-CRACK IT Challenge and seeks to exploit advances in computational approaches and machine learning to develop a "Virtual Dog" to ultimately replace their use for chronic toxicity studies. The Challenge is high risk because of the technical complexities, but the potential impact is significant for the use of dogs worldwide and the speed at which new medicines can be developed. You can read more about this initiative [here](#).

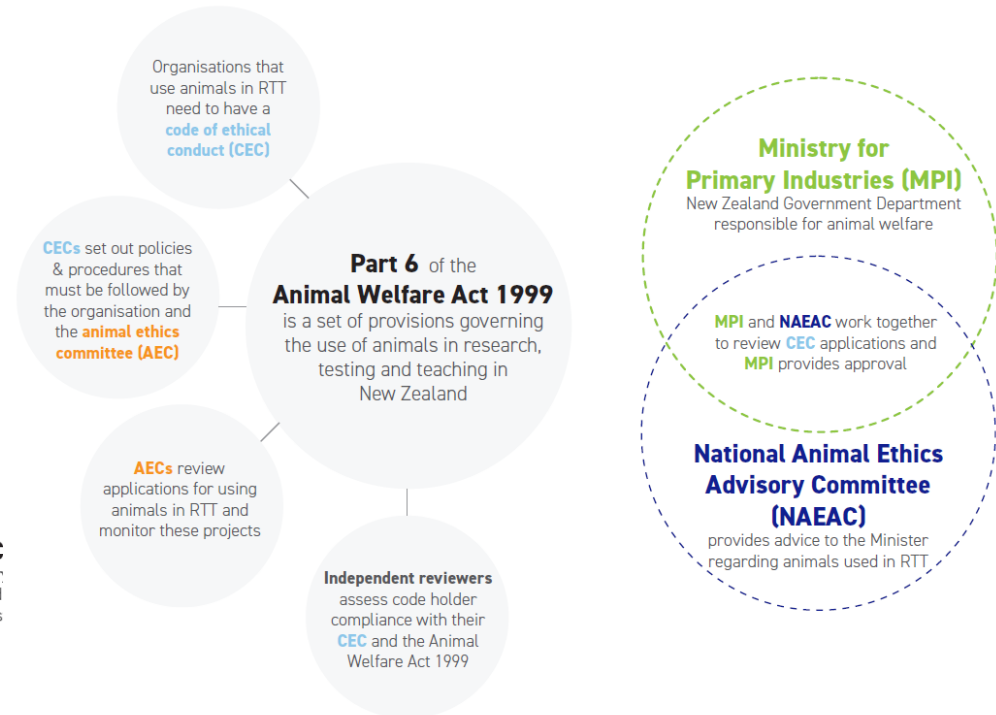
## RTT Infographics

NAEAC has recently developed the following infographics to describe the RTT system in New Zealand and to highlight important relationships in the wider regional RTT space.

These will also be added to/linked on the NAEAC and ANZCCART websites.



## Research, Testing and Teaching (RTT) in New Zealand



Visit the NAEAC website – [www.naeac.org.nz](http://www.naeac.org.nz)

Check out the NAEAC website to learn more about the work of the committee and how you can get involved.

**Need to get in touch?**

If you need to contact NAEAC please send us an email at [naeac@mpi.govt.nz](mailto:naeac@mpi.govt.nz).